

BASF
We create chemistry

enertite®

Open cell spray foam insulation



enertite®

A low density open cell spray applied polyurethane foam insulation ideal for roof, timber frame, wall and floor applications.

Applied as a liquid, this water blown system expands to many times its original size completely filling all voids helping to provide a continuous thermal and airtight building envelope.



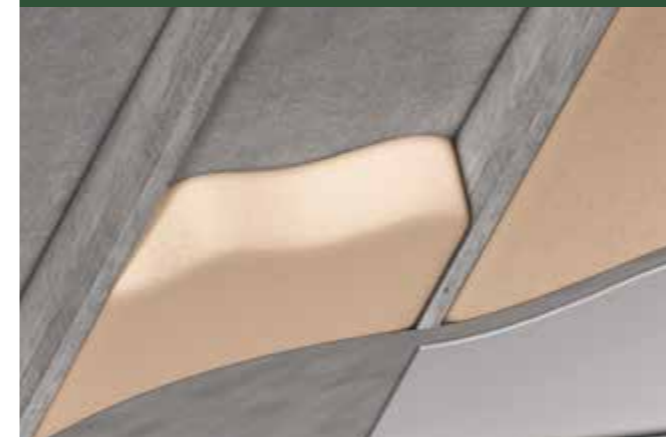
Features and benefits

- Quickly and economically applied with no waste, minimum fuss and maximum effect
- Cost effective option for superior airtight and thermal insulation
- Rapidly expands to 100 times filling voids and sealing
- Ideal for new build timber frame walls, pitched roof construction, refurbished dry lining walls, suspended timber floors, ceiling insulation and flat roof construction
- Will not settle or sag and will last lifetime of building
- Improves energy efficiency and provides a barrier against unwanted sounds
- No VOCs, CFCs, formaldehyde and has no harmful side effects
- The system has a low GWP (1) and zero ODP
- Manufactured by BASF the leading global producer of polyurethane spray foam
- Fully CE Marked and conforms to the Construction Products

Applications

ENERTITE® is installed by trained BASF Foammaster specialists, using custom-designed equipment. On application this two part system rapidly expands to fill the void, creating a continuous airtight thermal barrier, thereby providing superior performance. ENERTITE® is ideal for a wide range of applications including:

✓ Pitched roofs with counterbattens



✓ Pitched roofs with ventilation layers



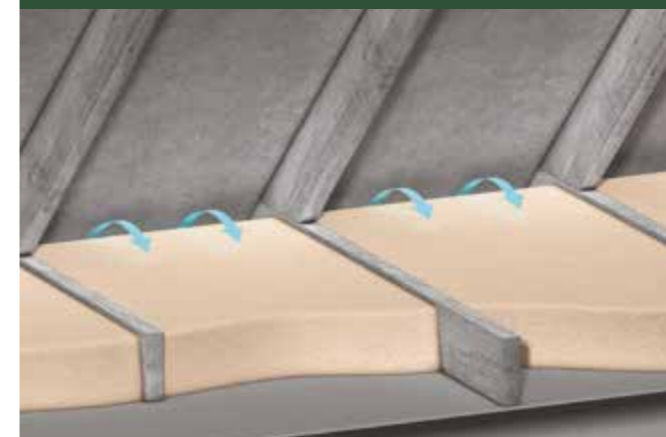
✓ Timber frame walls



✓ Refurbished walls



✓ Attic floors



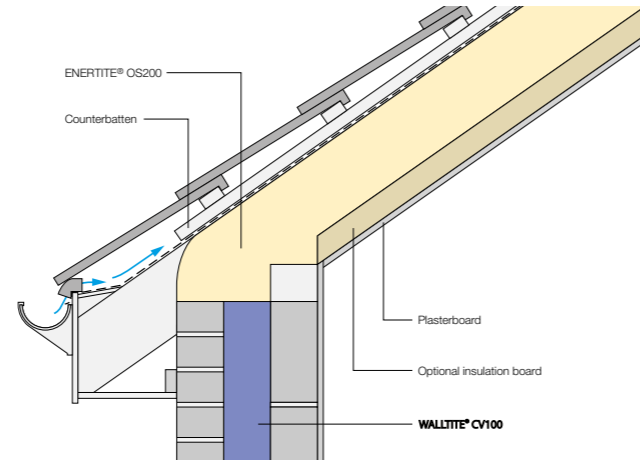
✓ Suspended floors



Typical details

Pitched roof with counterbattens

ENERTITE® is suitable for use in the sloping ceilings of a building where it is typically sprayed between the rafters at the required depths. Continuity of insulation from rafter to wall should be maintained at eaves level. For both non-breathable (HR) and breathable (LR) it is recommended that the Foammaster, builder and designer satisfy requirements of BS 5250: 2011, Control of Condensation in Buildings and current Building Regulations for ventilation in buildings. Where necessary rafter slides must be installed between the rafters to maintain sufficient air paths between the membrane and insulation. For habitable rooms, installation of a vapour control layer and lining boards should be used on the inside of the rafters.

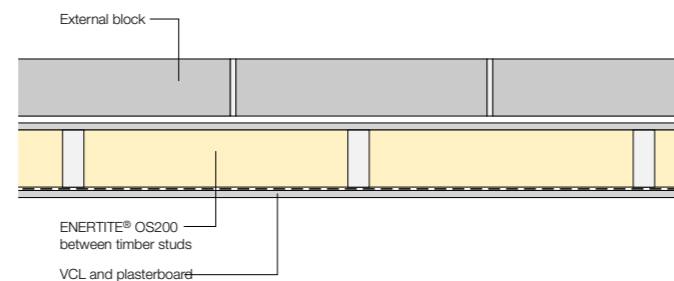


Typical U-values

Roof build-up	Insulation thickness (mm)	U-value (W/m²K)
Pitched roof with roof covering, breathable membrane, ENERTITE® between rafter, VCL and plasterboard	100	0.41
	150	0.29
	200	0.22
	250	0.18
	300	0.15
Pitched roof with roof covering, breathable membrane, ENERTITE® between rafters and 38mm insulation and plasterboard below rafter	100	0.23
	150	0.18
	200	0.15
	250	0.13
	300	0.12

Timber frame walls

ENERTITE® is the perfect insulation material for use in any timber frame wall application. The foam is applied to the open surface of the substrate before the finished wall covering is fixed. While ENERTITE® spray foam is completely airtight when sprayed between the timber studs, additional airtight materials may be required for timber to timber, and timber to concrete details.

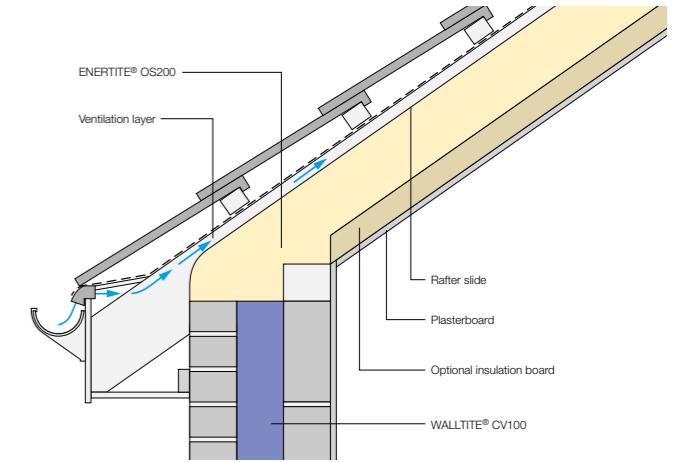


Typical U-values

Roof build-up	Insulation thickness (mm)	U-value (W/m²K)
Timber frame with exterior racking board and breathable membrane with ENERTITE® between studs, VCL and plasterboard	100	0.39
	140	0.30
	200	0.22
Timber frame with exterior racking board and breathable membrane with ENERTITE® between studs, 38mm insulation and plasterboard fixed to stud	100	0.22
	140	0.19
	200	0.15

Pitched roof ventilation layer

ENERTITE® is suitable for use in the sloping ceilings of a building where it is typically sprayed between the rafters at the required depths. Continuity of insulation from rafter to wall should be maintained at eaves level. For both non-breathable (HR) and breathable (LR) it is recommended that the Foammaster, builder and designer satisfy requirements of BS 5250: 2011, Control of Condensation in Buildings and current Building Regulations for ventilation in buildings. Where necessary rafter slides must be installed between the rafters to maintain sufficient air paths between the membrane and insulation. For habitable rooms, installation of a vapour control layer and lining boards should be used on the inside of the rafters.

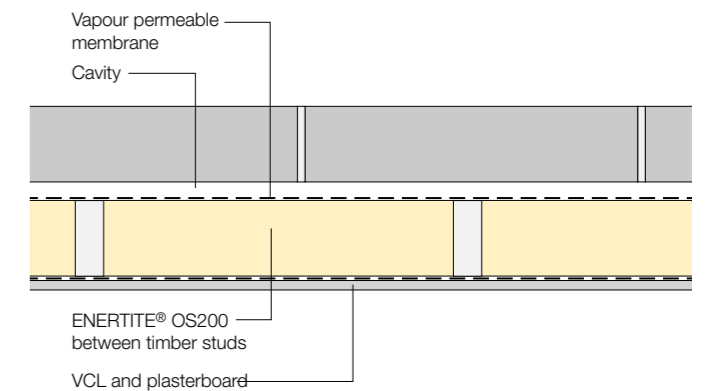


Typical U-values

Roof build-up	Insulation thickness (mm)	U-value (W/m²K)
Pitched roof with roof covering, breathable membrane, ENERTITE® between rafter, VCL and plasterboard	100	0.41
	150	0.29
	200	0.22
	250	0.18
	300	0.15
Pitched roof with roof covering, breathable membrane, ENERTITE® between rafters and 38mm insulation and plasterboard below rafter	100	0.23
	150	0.18
	200	0.15
	250	0.13
	300	0.12

Refurbished masonry walls

ENERTITE® is suitable for use as a thermal insulation barrier on all refurbished masonry walls. It is recommended that the open cell product does not come in contact with the external cold wall surface. A cavity should be formed between the back of the timber or metal stud and the internal face of the external wall. A vapour control layer and lining board should cover the ENERTITE® on the warm side of the insulation.



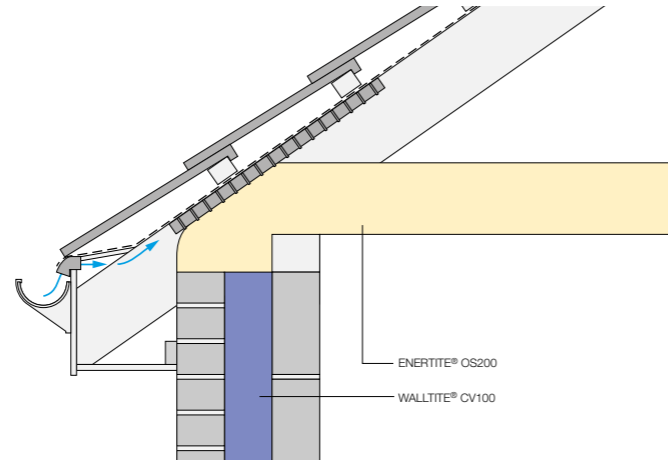
Typical U-values

Roof build-up	Insulation thickness (mm)	U-value (W/m²K)
Ceiling joists with ENERTITE sprayed between joists, VCL & plasterboard	75	0.40
	100	0.32
	125	0.27
	150	0.23
	175	0.20
Ceiling joists with ENERTITE sprayed between joists and additional 150mm of ENERTITE above joists, VCL and plasterboard	75	0.23
	100	0.20
	125	0.18
	150	0.16
	175	0.14

Typical details

Attic floors: insulation at ceiling level

ENERTITE® is sprayed in between ceiling joists and onto the attic lining board. Additional counter joists may be required for walk ways if ENERTITE® exceeds the depth of the joist. Eaves ventilation must be maintained in line with Building Regulations and BS5250 :2011, Code of practice for Control of Condensation in Buildings.

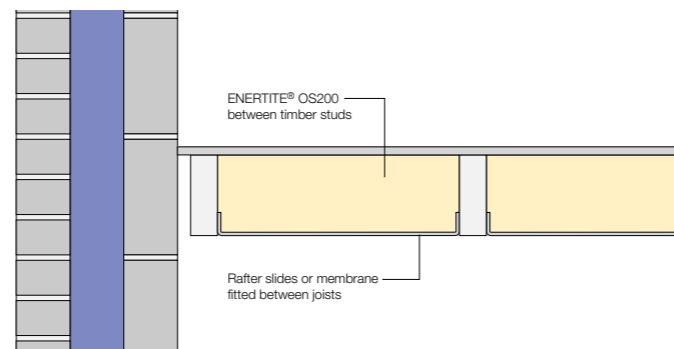


Typical U-values

Roof build-up	Insulation thickness (mm)	U-value (W/m²K)
Ceiling joists with ENERTITE sprayed between joists , VCL & plasterboard	100	0.40
	125	0.34
	150	0.28
	175	0.25
	200	0.22
Ceiling joists with ENERTITE sprayed between joists and additional 150mm of ENERTITE above joists, VCL and plasterboard	100	0.16
	125	0.15
	150	0.14
	175	0.13
	200	0.12

Suspended timber floor

ENERTITE® is suitable for installation between the floor joists in suspended timber floor construction. This should be installed by the Foammaster from above the floor or under the floor provided clear access can be gained. Ventilation slides can be fixed between floor joists to prevent foam from falling below joists. ENERTITE® foam should not come in contact with the ground below and the ventilation path under the floor joists must be maintained.



Typical U-values

Roof build-up	Insulation thickness (mm)	U-value (W/m²K)
Timber joists with ENERTITE® between joists and timber floor above	Perimeter area	0.20
	150	0.18
	200	0.15
xx	Perimeter area	0.40
	150	0.21
	200	0.17

Foam Masters

Approved Contractors

Every high performing system requires high performance installation to guarantee satisfaction. In order to ensure the highest standard application, BASF spray foam systems can only be installed by fully trained and qualified spray Foam Masters. A Foam Master is part of a well established and growing consortium of independent local spray foam contractors across Ireland and the UK.



FOAM MASTERS

Before receiving the Foam master accolade contractors must attend a rigorous training programme located at the BASF Training Centre in Alfreton. The training programme includes application techniques, building regulations, health and safety requirements and much more. Graduating from the Foam Master academy takes time and commitment. Upon completion each contractor is issued with a photo identity card and entry to part of the Foam Master database.

Why choose a Foam Master?

Foam Masters have become highly skilled installers of the BASF spray foam product range, guaranteeing the client that the project will be completed to the highest quality and with the best product available. Each Foam Master is a local independent contractor with a local reputation to maintain and as part of the Foam Master network, offers consistent level of service and quality throughout Ireland and the UK.

What they offer

- A comprehensive product range including cavity wall injection, closed and open cell foam manufactured by the leading supplier of polyurethane solutions for systems.
- Identify your needs and offer the most appropriate product to suit your application.
- Technical advice, U-value calculations and condensation risk analysis supported by both Econ and BASF.
- You benefit from the financial stability and quality assurance of the highly trained Foam Master professional whose work and business profile must meet the stringent quality standards of a renowned global corporation.



About ECON Insulation

We are leading distributors in the UK and Ireland of polyurethane spray in place and injection systems from BASF Polyurethanes. We are dedicated to providing high performance cost effective materials in line with our customer's needs. Our partnership with the industries longest established and most well respected manufacturer puts us at the forefront of the spray foam industry sector.

For more information, samples or if you would like to discuss a particular project please contact us at the details below.

About BASF

BASF creates chemistry for a sustainable future. As the world's largest chemical producer, they lead the way in developing and manufacturing polyurethane system solutions for construction, automotive, appliance leisure, seating, offshore and marine industries. Many of the systems are developed and formulated in close partnership with individual customers to meet their particular requirements.



ECON Polyurethanes, Unit 3, Broomhill Terrace,
Broomhill Road, Tallaght, Dublin 24
Tel: +353 (1) 4019729 Email: info@econps.ie

www.walltite.basf.ie

www.econinsulation.ie

ECON Polyurethanes, Whitehouse, Wilderpool Business
Park, Greenalls Avenue, Warrington WA4 6HL
Tel: +44 (0)1925 438170 Email: info@econinsulation.co.uk

www.walltite.basf.co.uk

www.econinsulation.co.uk

Your Foam Master contact:

